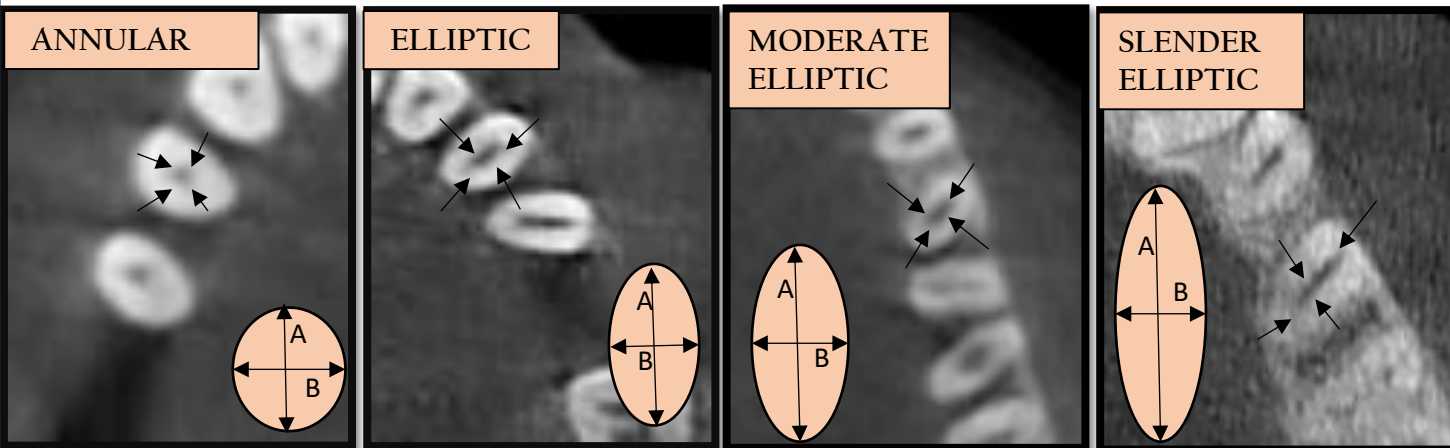


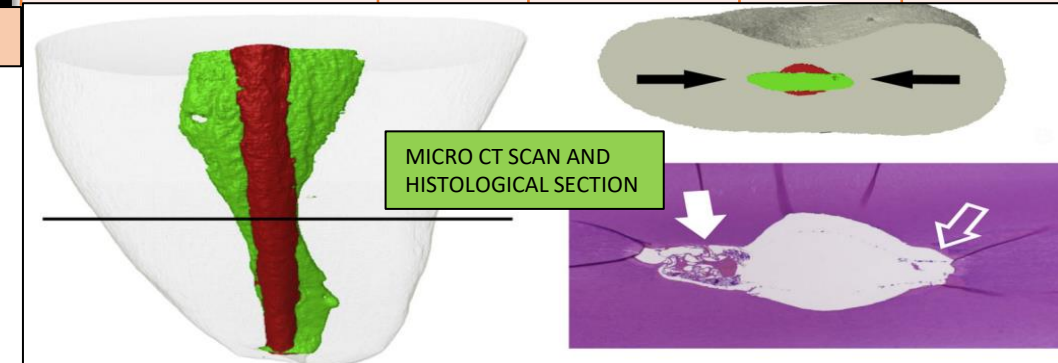
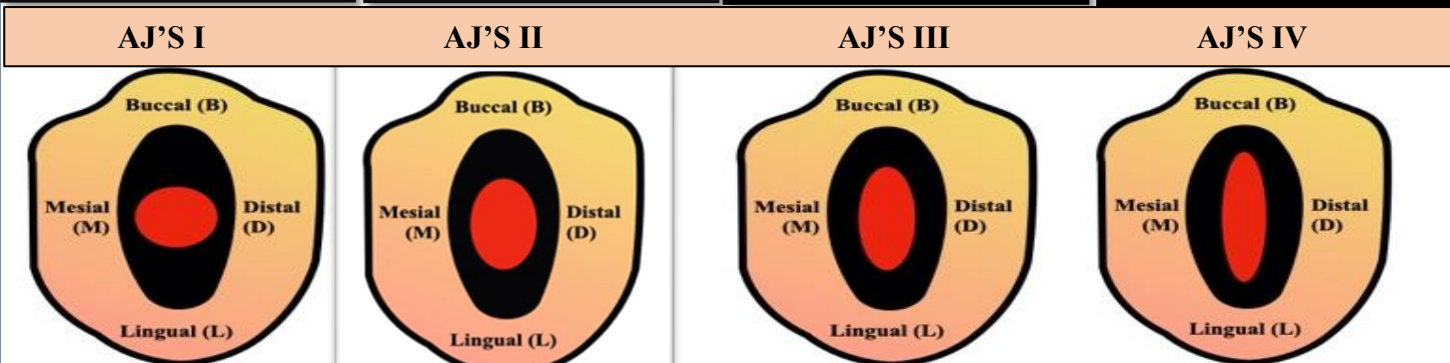
OVAL PATHWAYS: ANALYZING THE PREVALENCE OF OVAL-SHAPED ROOT CANALS IN MANDIBULAR PREMOLARS AND PROPOSING A NEW NOMENCLATURE

AIM is to find Prevalence of oval root canals in mandibular premolars of an Indian population: a retrospective study on CBCT scans and proposal of new nomenclature.

METHODOLOGY: Morphological variations in root canal configuration of 300 mandibular premolars were studied from retrospective CBCT scans of Indian population. The root canal shapes were evaluated at 3mm, 6mm and 9mm from the apex using Care Stream viewer software and nomenclature was formulated.



| Shape/ location from apex | A=B | A<1.5mm B | A<2m mB | A<2.5m mB |
|---------------------------------|-----|--------------|------------|--------------|
| Coronal(9mm) | 8 | 68 | 18 | 6 |
| Middle(6mm) | 11 | 57 | 28 | 4 |
| Apical(3mm) | 66 | 34 | 0 | 0 |



CONCLUSION: The oval shaped canal configuration has high prevalence rate in mandibular premolars. A thorough knowledge of this will enable the clinician to treat these cases successfully.