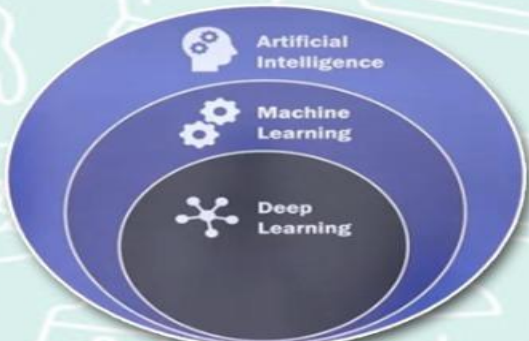
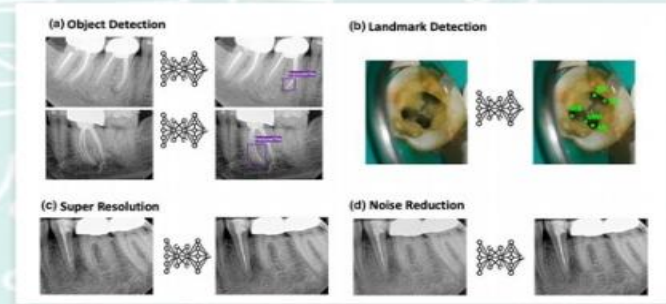
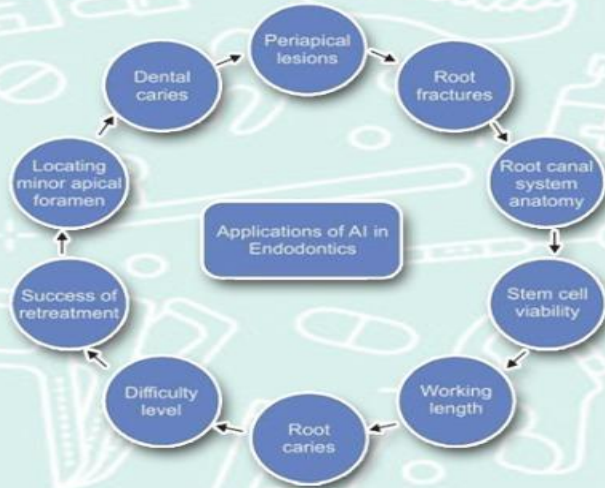




Endodontic Reimagined The Role of AI in Modern Dental Care



Limitation of AI Dentistry

- Small Simple Size
- Data from a Single Institution
- Training on Confirmed Cases Only
- Risk of Overfitting
- Lack of Data Heterogeneity
- Limited Generalizability

Expert diagnosis	AI diagnosis	Expert diagnosis	AI diagnosis
Cavitated caries	0.0% / 3.2% / 96.8% Cavitated caries	No caries	100.0% / 0.0% / 0.0% No caries
No caries	99.8% / 0.2% / 0.0% No caries	Non-cavitated caries	0.0% / 98.3% / 1.7% Non-cavitated caries
Cavitated caries	0.0% / 0.0% / 100.0% Cavitated caries	Non-cavitated caries	0.0% / 100.0% / 0.0% Non-cavitated caries

AI vs human dentists caries diagnosis study results