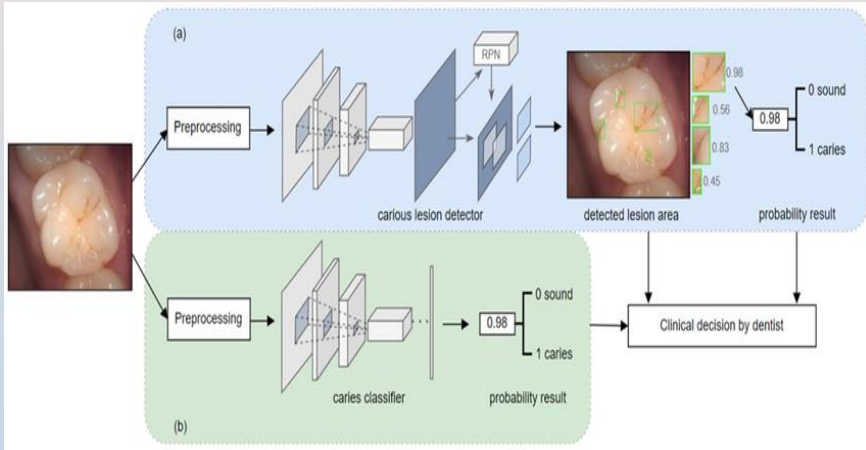
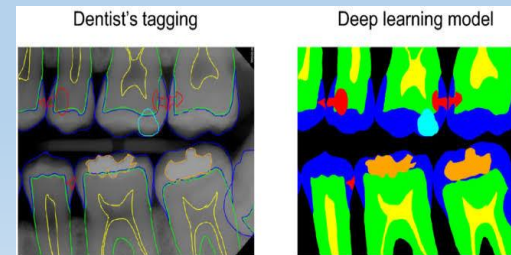
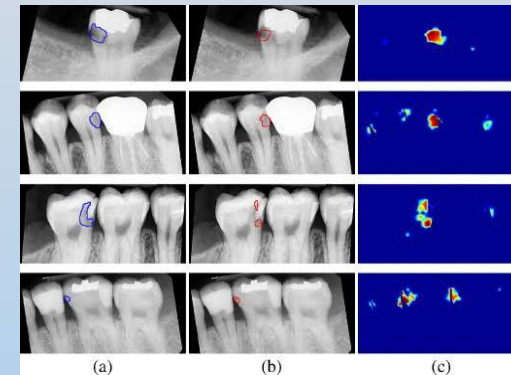
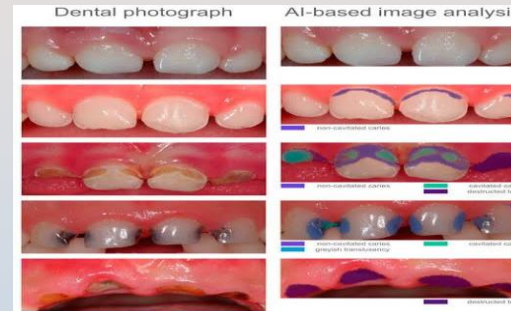


APPLICATIONS OF A.I. IN DIAGNOSIS OF DENTAL CARIES

Principles of AI in Caries diagnosis



Objectives of AI in caries diagnosis



Caries (red), enamel (blue), dentin (green), pulp (yellow), metal restoration (orange), restoration (sky blue), gutta percha (brown), background (black)

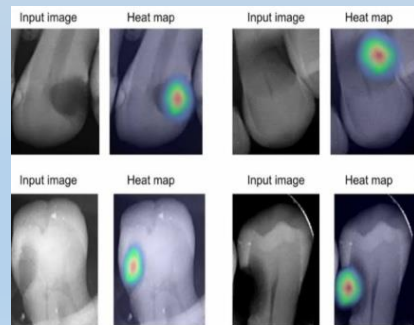
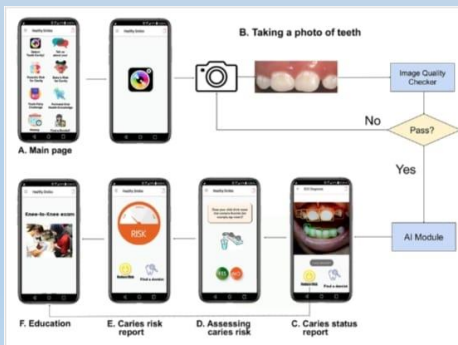
Advantages :-

- Highest proven efficacy of all caries detection methods.
- No ionizing radiation risks
- Easy to record and compare progress

Disadvantages-

- Do not assess secondary caries and root caries.
- Not used on tooth surfaces-plaque and other debris.

Tools used in AI for diagnosis of caries



Smart AI Mobile

ResNet & SAM model

Future AI technology



Virtual reality