

INTRODUCTION:

In adhesive dentistry the ability to bond the tooth structure varies from superficial enamel to deeper layers of dentin. By following BRD protocols – bond strength and morphology can be improved.



Immediate dentin sealing

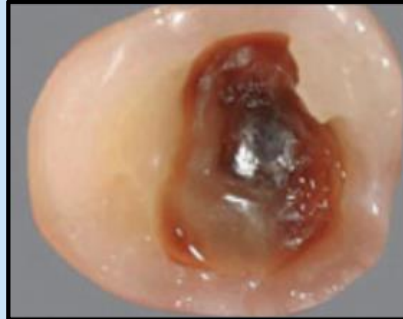


Resin Coating



DECOUPLING WITH TIME: In a sequence, establish the bonded seal of dentin with thin layers of resin and then, after a period of time, to **connect/couple** rest of restoration to thin layers of resin (5-30 min).

Creating peripheral seal zone



BIOMIMICRY IN ADHESIVE DENTISTRY - GET STRONGER WITH BRD



Deep Margin Elevation

Outcome of BRD



Polyethylene Fiber



Dentin/Enamel Replacements



CONCLUSION: BRD enhances the longevity of restorative dental treatment and reduces future cycles of retreatment.